

# JARGY CO., LTD.

## Test Report

Model : CBL-D302MBS-5m

Ver : 1.0

Date : 2016/4/6

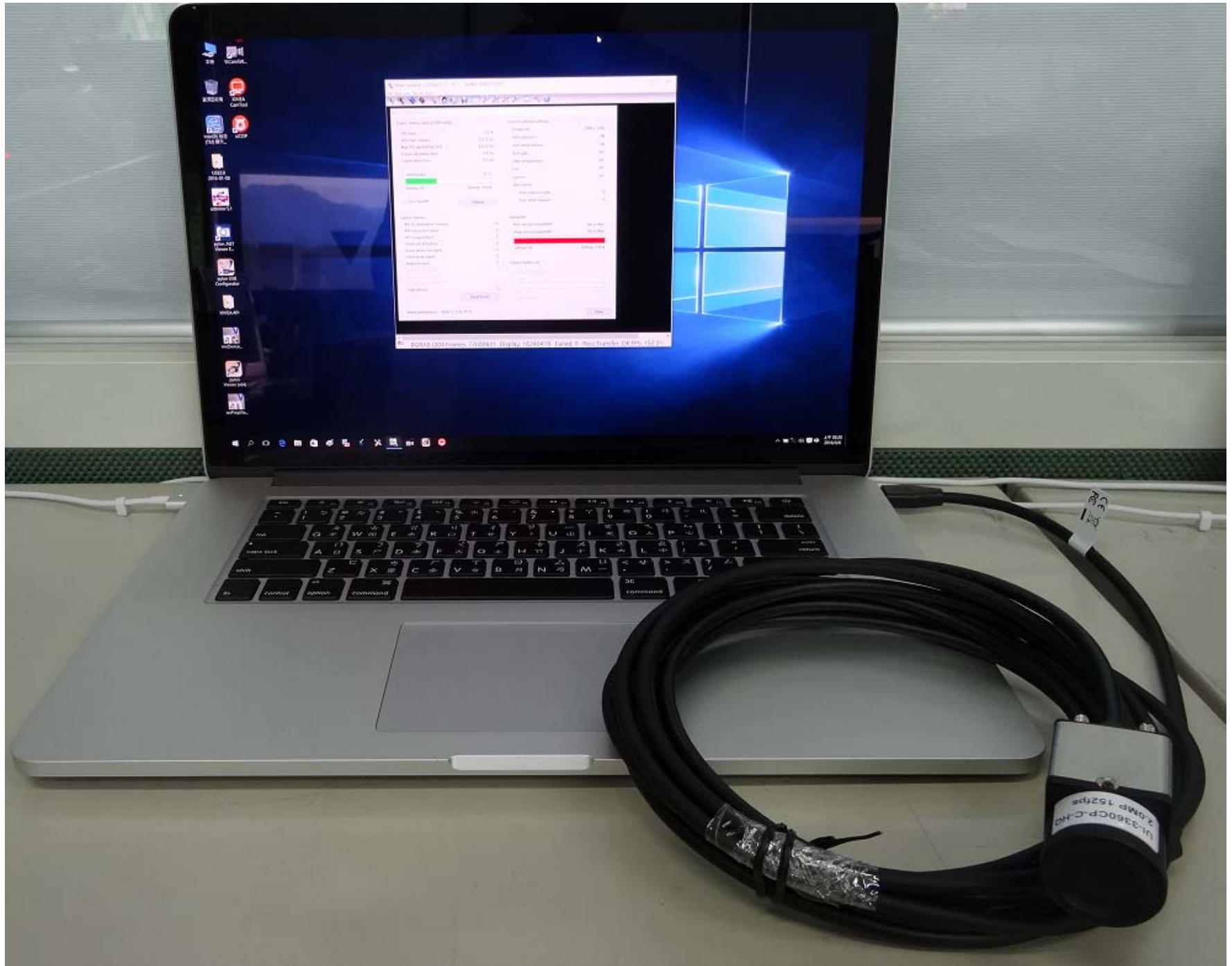
Camera Brand Name : IDS

### Test Platform

Type	NB		
Model	MAC		
OS	Windows 10 Pro 64-bit		
CPU	Intel Core i7-4770HQ		
HDD	SATA III SSD 256GB		
RAM	DDR3 16GB		
USB 3.0	PCH 2 Ports(Intel Z87 Native)		


Tested Camera : UI-3360CP-C-HQ

Tested time : 142h



uEye Cockpit - UI336xCP-C ID: 1 - SerNo.: 4102771852

File View uEye Profi Help

### Host Performance

Frame Timing (only in DIB mode)	
CPU load	34 %
FPS from Camera	152.2 fps
Max FPS possible by CPU	416.8 fps
Frame calculation time	2.4 ms
Frame delay time	6.6 ms

Timing Ratio: 0.37

Settings OK Settings critical

Use OpenMP Default

Current software settings	
Image size	2048 x 1088
Auto exposure	ON
Auto white balance	ON
Auto gain	OFF
Edge enhancement	OFF
LUT	OFF
Gamma	OFF
Skip frames	
Auto exposure/gain	4
Auto white balance	4

Capture failures	
API no destination memory:	0
API conversion failed:	0
API image locked:	0
Driver out of buffers:	0
Driver device not ready:	0
USB transfer failed:	0
Device timeout:	0
Device buffer overrun:	0
Device missed images:	0
Device frame capture failed:	0
<b>Total failures:</b>	<b>0</b>

Reset Errors

Bandwidth	
Max interface bandwidth:	380.0 MB/s
Peak camera bandwidth	399.0 MB/s

Settings OK Settings critical

Camera buffer info	
Camera image buffers	0
Used	0
0%	100%
Resend packets	0

Device temperature: 60.6° C (141.0° F) Close

BGRA8 (204 Frames: 77603119 Display: 16240903 Failed: 0 Recc Transfer: OK **FPS: 152.21**)

# JARGY CO., LTD.

## Test Report

Model : CBL-D302MBS-7m

Ver : 1.0

Date : 2016/4/14

Camera Brand Name : IDS

### Test Platform

Type	NB		
Model	MAC		
OS	Windows 10 Pro 64-bit		
CPU	Intel Core i7-4770HQ		
HDD	SATA III SSD 256GB		
RAM	DDR3 16GB		
USB 3.0	PCH 2 Ports(Intel Z87 Native)		


Tested Camera : UI-3360CP-C-HQ

Tested time : 74h



uEye Cockpit - UI336xCP-C - ID: 1 - SerNo.: 4102771852

File View uEye Profi Help

### Host Performance

Frame Timing (only in DIB mode)	
CPU load	33 %
FPS from Camera	152.2 fps
Max FPS possible by CPU	415.1 fps
Frame calculation time	2.4 ms
Frame delay time	6.6 ms

Timing Ratio: 0.37

Settings OK Settings critical

Use OpenMP Default

Current software settings	
Image size	2048 x 1088
Auto exposure	ON
Auto white balance	ON
Auto gain	OFF
Edge enhancement	OFF
LUT	OFF
Gamma	OFF
Skip frames	
Auto exposure/gain	4
Auto white balance	4

Capture failures	
API no destination memory:	0
API conversion failed:	0
API image locked:	0
Driver out of buffers:	0
Driver device not ready:	0
USB transfer failed:	0
Device timeout:	0
Device buffer overrun:	0
Device missed images:	0
Device frame capture failed:	0
Total failures:	0

Reset Errors

Bandwidth	
Max interface bandwidth:	380.0 MB/s
Peak camera bandwidth	399.0 MB/s

Settings OK Settings critical

Camera buffer info	
Camera image buffers	0
Used	0
0%	100%
Resend packets	0

Device temperature: 61.6° C (142.9° F) Close

BGRA8 (204 Frames: 40801344 Display: 8538206 Failed: 0 Recon: 0 Transfer: OK FPS: 152.21)

# JARGY CO., LTD.

## Test Report

Model : CBL-D302MBS-10m

Ver : 1.0

Date : 2016/4/18

Camera Brand Name : IDS

### Test Platform

Type	NB		
Model	MAC		
OS	Windows 10 Pro 64-bit		
CPU	Intel Core i7-4770HQ		
HDD	SATA III SSD 256GB		
RAM	DDR3 16GB		
USB 3.0	PCH 2 Ports(Intel Z87 Native)		


Tested Camera : UI-3360CP-C-HQ

Tested time : 87h



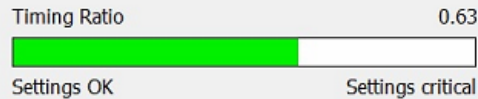




### Host Performance

#### Frame Timing (only in DIB mode)

CPU load	58 %
FPS from Camera	152.2 fps
Max FPS possible by CPU	242.6 fps
Frame calculation time	4.1 ms
Frame delay time	6.6 ms



Use OpenMP

Default

#### Current software settings

Image size	2048 x 1088
Auto exposure	ON
Auto white balance	ON
Auto gain	OFF
Edge enhancement	OFF
LUT	OFF
Gamma	OFF
Skip frames	
Auto exposure/gain	4
Auto white balance	4

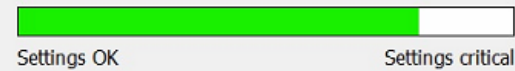
#### Capture failures

API no destination memory:	0
API conversion failed:	0
API image locked:	0
Driver out of buffers:	0
Driver device not ready:	0
USB transfer failed:	0
Device timeout:	0
Device buffer overrun:	0
Device missed images:	0
Device frame capture failed:	0
<b>Total failures:</b>	<b>0</b>

Reset Errors

#### Bandwidth

Max interface bandwidth:	420.0 MB/s
Peak camera bandwidth	344.0 MB/s



#### Camera buffer info

Camera image buffers	0
Used	0
0%	100%
Resend packets	0

Device temperature: 58.4° C (137.1° F)

Close

# JARGY CO., LTD.

## Test Report

Model : CBL-D302MBS-15m

Ver : 1.0

Date : 2016/4/21

Camera Brand Name : IDS

### Test Platform

Type	NB		
Model	MAC		
OS	Windows 8.1 Pro 64-bit		
CPU	Intel Core i7-3615QM		
HDD	SATA III SSD 128GB		
RAM	DDR3 8GB		
USB 3.0	PCH 2 Ports(Intel Z77 Native)		


Tested Camera : UI-3360CP-C-HQ

Tested time : 72h




uEye Cockpit - UI336xCP-C - ID: 1 - SerNo.: 4102771852

File View uEye Profi Help

### Host Performance

**Frame Timing (only in DIB mode)**

CPU load	56 %
FPS from Camera	152.2 fps
Max FPS possible by CPU	304.6 fps
Frame calculation time	3.3 ms
Frame delay time	6.6 ms

Timing Ratio: 0.50  
  
Settings OK Settings critical

Use OpenMP

**Current software settings**


Image size	2048 x 1088
Auto exposure	OFF
Auto white balance	OFF
Auto gain	OFF
Edge enhancement	OFF
LUT	OFF
Gamma	OFF
Skip frames	
Auto exposure/gain	⌵
Auto white balance	⌵

**Capture failures**

API no destination memory:	0
API conversion failed:	0
API image locked:	0
Driver out of buffers:	0
Driver device not ready:	0
USB transfer failed:	0
Device timeout:	0
Device buffer overrun:	0
Device missed images:	0
Device frame capture failed:	0
<b>Total failures:</b>	<b>0</b>

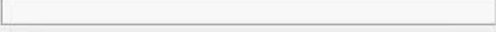
**Bandwidth**

Max interface bandwidth:	420.0 MB/s
Peak camera bandwidth:	344.0 MB/s

  
Settings OK Settings critical

**Camera buffer info**

Camera image buffers	0
Used:	0

  
0% 100%  
Resend packets: 0

Device temperature: 50.1° C (122.2° F)

MONO8 (2048 x 1 Frames: 39057996 Display: 8224257 Failed: 0 Recon: 0 Transfer: OK **FPS: 152.21**)